

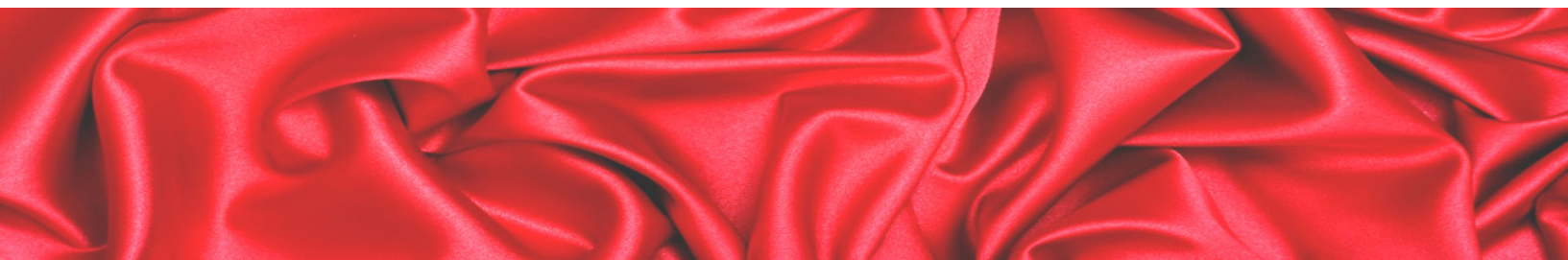
Carù

*Raising machines
with single and double drum*



 **ITALY**
For info: info@carusrl.it

Since 1961



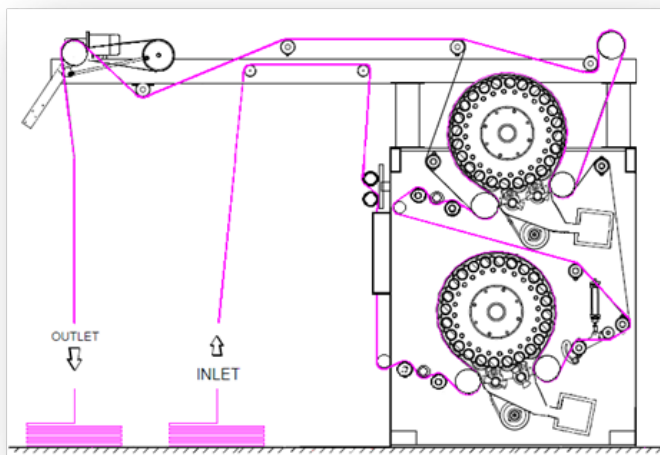
DOUBLE DRUM RAISING MACHINE

Innovative, high-performance, sturdy and very reliable raising machines made in the name of technological innovation at the service of an increasingly demanding clientele but always in accordance with our sixty-year construction experience.

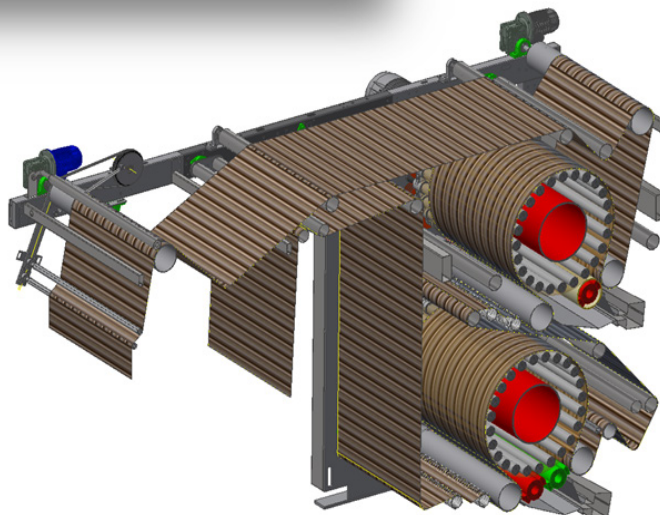
Carù

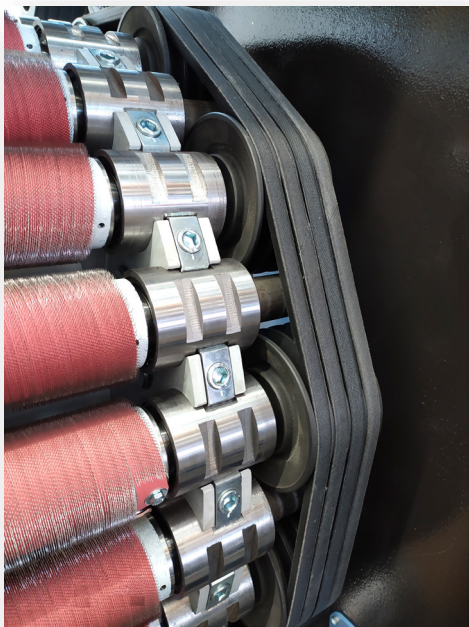


Perfect fabric control at inlet and out-let by means of easily adjustable devices. Double drum with 24+24 rollers. Rotation of the drum reversible and variable. Raising rollers made of strong steel tube and end journals with double bearing, driver by two sets of three V-belts each; Pneumatic system for adjustment and control of the belts tension, that could be quickly excluded at the passage of any ill-done seam or in case of any fabric smash. Fabric tension directly adjustable from the control panel with the indicator of the current value. Rotation of the only drum or the only raising rollers allow respectively to load semi-automatically the fabric or the maintenance and replacement of the raising fillet. Raising fillet cleaning by means of two brushing rollers rotating synchronously with the drum, drive by toothed belts and provided with a simple system of phasing with the raising rollers and with a special device for their disengagement in case of any fabric smash, ensuring an immediate machine emergency stopping. Hoods for the process waste suction. Fabric drawing rollers, raising rollers and drum are independently driven by frequency control AC motors.(inverter controlled) Control panel(touch screen) including a push-button quickly to zero the raising rollers force. Working values also adjustable before starting the machine. Starting with electronically controlled acceleration ramp. All devices and working features are complying with the standards safety.



Carù, who has been designed and manufacturing textile finishing machinery since the early sixties, always looking for technologically advanced solutions;





Caru

The 2G24 raising machine has been recently renewed and equipped with the latest components and knowledges.

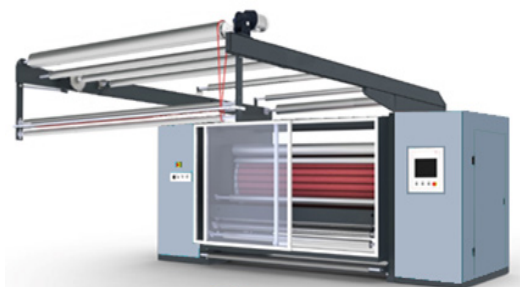
In the 2G24, the main objective was to create a versatile and complete machine, capable of facing and therefore facilitating all the problems related to the raising process of all types of fabrics.

The design of the new range of our raising machines, was carried out according to the most modern design methods, thus allowing the creation of a product that, on the market, is placed in the range of high-performance machines.



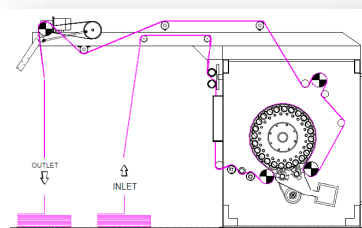
MACHINE FEATURES

ROLLER WIDTH	2000 - 3400mm
WORKING WIDTH	1800 - 3200mm
FABRIC FEED SPEED	40m/min
DRUM SPEED	80/120 RPM
INSTALLED POWER	66 Kw / 110 Kw
POWER ABSORPTION	45-48 Kw 86-88 Kw
AIR PRESSURE	5 bar
COMPRESSED AIR CONS.	40Nl/min



Caru

DOUBLE DRUM RAISING
MACHINE 2G24



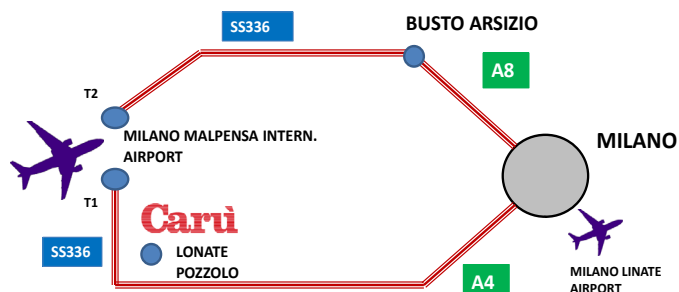
SINGLE DRUM RAISING
MACHINES G24 -G30- G36

Carù



Production range:

- SUEDING MACHINES
- SHEARING MACHINE
- RAISING MACHINES
- DUST-CLEANING MACHINES
- CORDUROY MACHINES
- LASER ENGRAVING MACHINES
- ULTRASONIC SLITTING/WELDING MACHINES



Carù is located at 10 minutes from the International Airport of Milano Malpensa

Macchine Carù S.r.l.

Sede legale, Registered office: Via Magenta 43, 21052 Busto Arsizio (VA) ITALY

Sede operativa, Headquarters: Via Lario, 4 - 4A, 21015 Lonate Pozzolo (VA) ITALY

Tel: +39 0331-261485 - Email: info@carusrl.it



Plva 02897530123 - Cap. Soc. € 40.000,00 i.v. - N. REA: Varese 300424

MACCHINE CARU' S.r.l

Via Lario 4, Lonate Pozzolo (VA), Italy

Tel: 0331 261485 Email: info@carusrl.it

Enhancement, knowledge and innovation.

