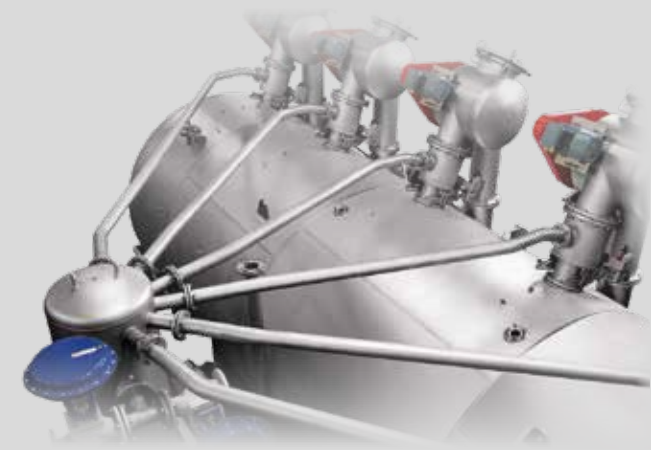
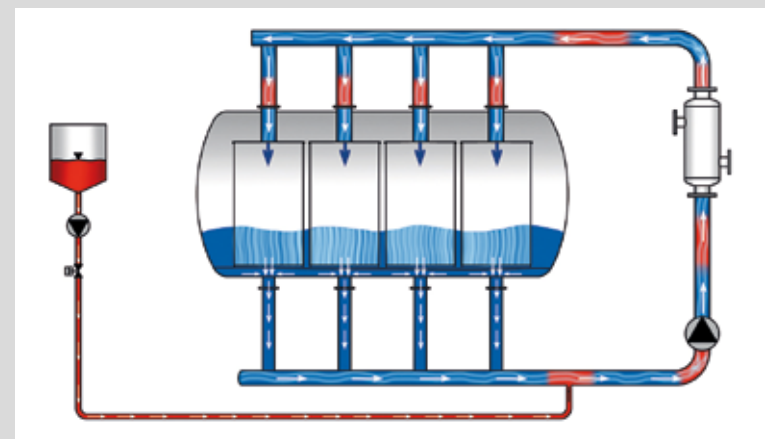


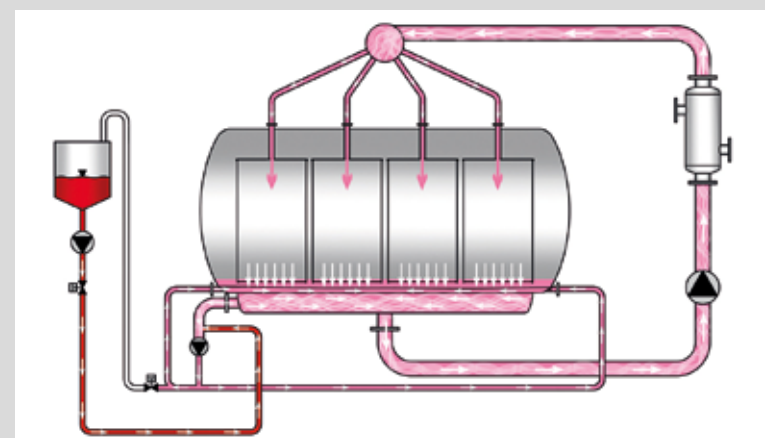
Innotechnology



The transversal movement of the treatment bath (Brazzoli patent) substantially enhances and speeds up the achievement of a perfectly smooth treatment bath. This innovative flow permits to mix completely the bath every 30° hence mixing is 4 times as much the bath volume per lap, based on a hypothetical average rope turn of 2 minutes. The ideal bath smoothness is achieved thanks to also two new devices that distribute and feed the bath to the nozzles (patent pending) as well as to a multi-intake system that develops throughout the entire width of the machine. The perfect intake of the bath so obtained, combined with the optimal bath distribution and the bath transversal mixing, ensures ideal working conditions.



Conventional flow



Innovative translational flow



Brazzoli Srl

Via alla chiesa, 41 - 20030 Senago (MI) - Italy

+39 02 9901921 info@brazzoli.it

brazzoli.it



Ecologic Plus-brazzoli - Eng - 12 - 2018



ECOLOGIC PLUS 

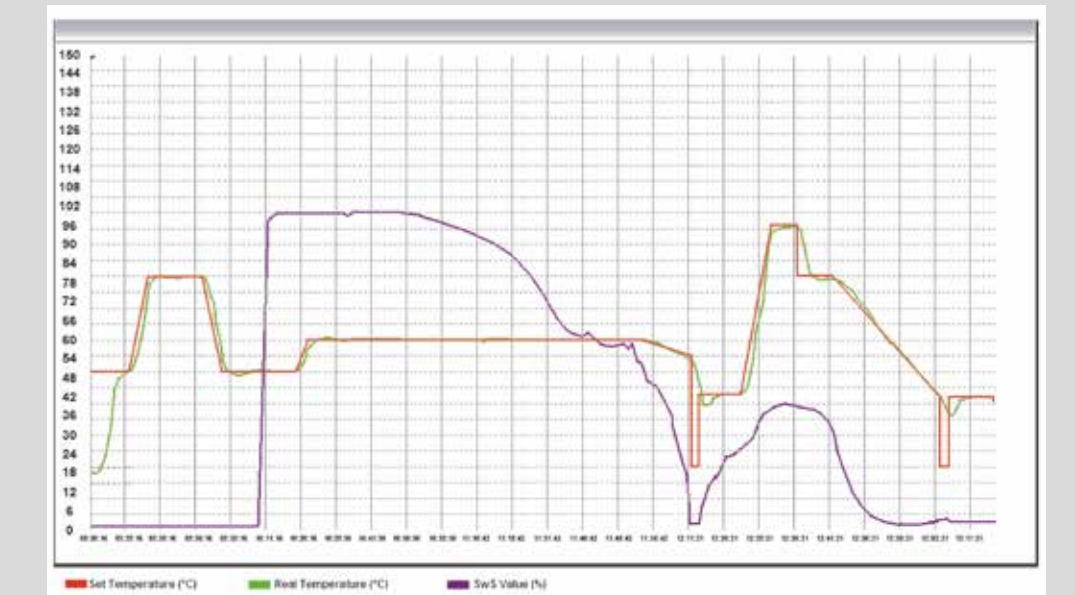
Ecologic Plus Another step forward in the future

Ecologic Plus is the machine for rope fabrics dyeing process designed and produced by Brazzoli.

As evolution of the previous Ecologic, this new version controls and automatically operates all the machine parameters (lap time, bath ratio, fabric absorption, pump speed, reel speed) according to the processed fabric.

The innovations introduced in the new Ecologic Plus optimize even more its total automation. The new O.P.S. (Optimized Performance System) replaces the traditional W.S.S. for a better control of dyeing re-circulation flow.

The control of the fabric movement has been improved to allow high working speeds without piling, crease marks and tensions. New technical solutions provide a higher mechanical reliability while maintenance procedures have been changed for optimizing productivity thanks to reduced machines down-times.

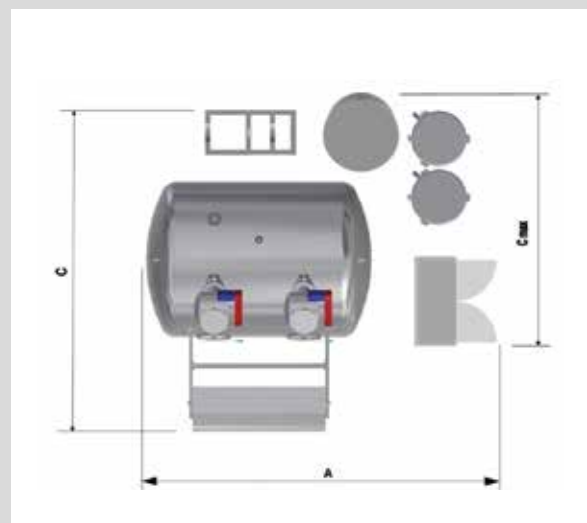
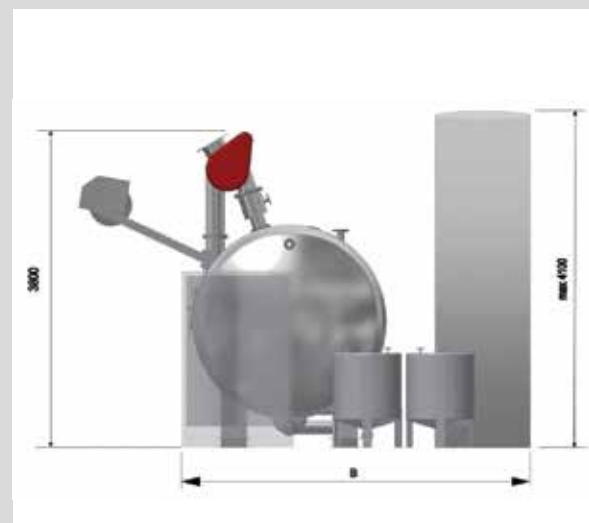


Basis knit cotton 100% - reactive process | Fabric absorptio: 200%

	Light shades	Middle shades	Dark shades
Water (l/kg)	20/22	25/26	28/32
Steam (kg of steam/kg of fabric)	1.1	1.2	1.7
Energy (kW)	0.11	0.12	0.13
Process time (H:min) (including loading and unloading)	4:20	4:40	5:00

Final liquor ratio: 3.8

Technical specifications



Models	Dimensions			
	A mm	B mm	C mm	C max mm
EC L HT 1 XC 1 (200kg)	3950	4000	5300	5350
EC L HT 2 XC 1 (400kg)	4850	4100	5350	5350
EC L HT 3 XC 1 (600kg)	5900	4100	5400	5450
EC L HT 4 XC 1 (800kg)	6950	4200	5450	5500
EC L HT 5 XC 1 (1000kg)	7950	4250	5550	5550
EC L HT 6 XC 1 (1200kg)	9100	4400	5700	5700

Models	Dimensions			
	A mm	B mm	C mm	C max mm
EC L HT 1 XC 2 (250kg)	3950	4000	5300	5350
EC L HT 2 XC 2 (500kg)	5250	4100	5400	5450
EC L HT 3 XC 2 (750kg)	6550	4200	5500	5500
EC L HT 4 XC 2 (1000kg)	7950	4250	5550	5550
EC L HT 5 XC 2 (1250kg)	9300	4400	5700	5700
EC L HT 6 XC 2 (1500kg)	10550	4400	5700	5700

Models	Dimensions			
	A mm	B mm	C mm	C max mm
EC L HT 1 XC 3 (300kg)	3950	4000	5300	5350
EC L HT 2 XC 3 (600kg)	5450	4100	5400	5450
EC L HT 3 XC 3 (900kg)	6850	4200	5500	5500
EC L HT 4 XC 3 (1200kg)	8350	4250	5550	5550
EC L HT 5 XC 3 (1500kg)	9800	4400	5700	5700
EC L HT 6 XC 3 (1800kg)	11100	4400	5700	6000

Models	Dimensions			
	A mm	B mm	C mm	C max mm
EC L HT 1 XC 4 (400kg)	4350	4000	5300	5350
EC L HT 2 XC 4 (800kg)	6150	4000	5300	5500
EC L HT 3 XC 4 (1200kg)	8200	4000	5300	5700
EC L HT 4 XC 4 (1600kg)	9750	4600	5500	5700
EC L HT 6 XC 4 (2400kg)	14200	4600	5500	6250

The indicated loading capacity refers to knitwear 100% cotton with a weight of 250 g/ml for model XC 1 and XC 2 and with a weight of 300 g/ml for model XC 3 and XC 4. The right to make design changes is reserved; the quoted dimensions are non-binding.



Quick rubber stripes replacement system

The new reel design allows simple and quick replacement of the rubber stripes without disassembling the whole group to reduce drastically the machine downtimes due to maintenance and increasing of productivity. (OPTIONAL)



Variable Turbovario nozzle

The jet flow, that strikes the fabric to 360°, can be adjusted by means of the variable Turbovario nozzle. The mechanical movement inside allows the variation of the flow pressure in real time and allows it to adapt to the different types of fabric processed. This procedure is set into the processing recipe and is automatically adjusted by means of a servomotor. Available diameters: 110-140-168 mm and special version for terry towel 273 mm. (STANDARD)



Flange for the recirculation pump cleaning

The new flange inserted in the pipeline allows a quick and simple cleaning of the re-circulation pump reducing machines down-time. (OPTIONAL)



Preparation tank

Ecologic Plus is designed to work with or without the preparation tank, maintaining with both technical solutions, the highest dyeing quality and the shortest dyeing times. (OPTIONAL)



Plaiter

The special Brazzoli plaiter, thanks to its movement, fills 100% of the basket and positions the fabric evenly, resulting in optimum utilization of the production capacity and the possibility of working in double ropes, avoiding knot problems. (STANDARD)



Innowash

The new position of O.P.S. sensor has given perfect stability at the signal without turbulences or foams. The measurement of the turbidity of the bath is continuous, without interruptions. (STANDARD)

BUILDER OF A COLOURED WORLD



Twin Technology

To increase productivity, all the range of machinery by Brazzoli can work at "double (multiple) ropes" in the same dyeing chamber with medium, light and very light (such as body-size) fabrics without entanglements, tensions and knots. This technology permits keeping the optimal load and the minimum bath ratio as well as the consequent control of production costs.



Multiflex

The system permits to couple machines having same number of chambers (i.e. 250 + 250 kg) to produce one bigger lot with same shade (color).



Twin Split

Equipment for dividing the fabrics after treatment in double (multiple) rope.



Operation panel

All the dyeing process are automatically controlled by means of an external touch screen. The advanced software available for the Ecologic Plus operation panel are: SETEX, SEDO, EAS, ELIAR, AREL.